



BRENT INTERNATIONAL SCHOOL SUBIC
Presents

Disney's BEAUTY AND THE BEAST



DIRECTED BY MR. STEVE SEDO

CAMILA UGARTE JIHWAN AN DYLAN JACOB DINO KARL CUDIA
ANDREAS BORELLO TEO LADRIERE ARDRE NIKOLAS VALDEZ EUN JIN KIM ELIN EFFINGER
SAVANNAH IGNACIO JULIANNE RAPP ARYANNA GRIARTE
CALEB RIVERO GEORGE KING JELAINÉ SUPERIO ABCDE DRAKE ATASHA AMOS
ADRIANA ADAM GABRIELLE REUTOTAR LACHARY CABALANG

MARCH 21 & 22, 2024 / 6:30 PM
@ BRENT MPH / PH250

BOOK BY LINDA WOOLVERTON

MUSIC BY ALAN MENKEN LYRICS BY HOWARD ASHMAN AND TIM RICE

ORIGINAL BROADWAY PRODUCTION AND ORIGINALLY PRODUCED BY DISNEY THEATRICAL GROUP

DISNEY'S BEAUTY AND THE BEAST JR IS PRESENTED THROUGH SPECIAL ARRANGEMENT WITH
AND ALL AUTHORIZED MATERIALS ARE SUPPLIED BY
MUSIC THEATER INTERNATIONAL, NEW YORK, NY



BASED ON THE ORIGINAL BROADWAY PRODUCTION THAT RAN FOR OVER THIRTEEN YEARS AND WAS NOMINATED FOR NINE TONY AWARDS, AND THE ACADEMY AWARD-WINNING MOTION PICTURE, DISNEY'S BEAUTY AND THE BEAST JR. IS A FANTASTIC ADAPTATION OF THE STORY OF TRANSFORMATION AND TOLERANCE. DISNEY'S BEAUTY AND THE BEAST JR. FEATURES SOME OF THE MOST POPULAR SONGS EVER WRITTEN BY ALAN MENKEN AND THE LATE HOWARD ASHMAN, ALONG WITH NEW SONGS BY MR. MENKEN AND TIM RICE.

THE CLASSIC STORY TELLS OF BELLE, A YOUNG WOMAN IN A PROVINCIAL TOWN, AND THE BEAST, WHO IS REALLY A YOUNG PRINCE TRAPPED UNDER THE SPELL OF AN ENCHANTRESS. IF THE BEAST CAN LEARN TO LOVE AND BE LOVED, THE CURSE WILL END AND HE WILL BE TRANSFORMED TO HIS FORMER SELF. BUT TIME IS RUNNING OUT. IF THE BEAST DOES NOT LEARN HIS LESSON SOON, HE AND HIS HOUSEHOLD WILL BE DOOMED FOR ALL ETERNITY.



WITH MANY FUN SUPPORTING ROLES ALLOWING STUDENTS TO PLAY OBJECTS INSIDE THE CASTLE, THIS "TALE AS OLD AS TIME" IS FILLED WITH SPECTACULAR COSTUME AND SET OPPORTUNITIES.

MT ENTERPRISES, INC.
ALL RIGHTS RESERVED.

MESSAGE FROM THE HEADMASTER

DEAR STUDENTS, PARENTS, STAFF AND GUESTS,

IT IS WITH GREAT PLEASURE THAT I EXTEND A WARM WELCOME TO THIS YEAR'S MIDDLE AND UPPER SCHOOL STAGE PRODUCTION. AS THE CURTAINS PART AND THE LIGHTS ILLUMINATE THE STAGE, WE REACH THE CULMINATION OF A THREE MONTH JOURNEY FEATURING A NUMBER OF FIRSTS, A FEW CHERISHED RETURNS AND AN ABUNDANCE OF DEDICATION, FOCUSED WORK AND CREATIVITY.

ALLOW ME TO SHARE SOME HIGHLIGHTS WITH YOU. FIRST, WE HAVE THE RETURN OF ONE OF OUR STUDENTS TO A STARRING ROLE AFTER A SIX-YEAR HIATUS FROM ACTING. WE ALSO CELEBRATE THE RETURN OF THREE REMARKABLE SENIORS WHO GRACE OUR STAGE FOR THE FINAL TIME. THEIR COMMITMENT AND UNWAVERING DEVOTION HAVE ENRICHED OUR PRODUCTIONS THROUGHOUT THE YEARS.

THIS YEAR'S PLAY ALSO SEES NEW STAGE ENTHUSIASTS JOINING THE RANKS, AS MORE THAN HALF OF OUR PRODUCTION CREW HAILS FROM MIDDLE SCHOOL. THEIR ENTHUSIASM AND FRESH PERSPECTIVES INFUSE EACH PERFORMANCE WITH A VIBRANT ENERGY. NOT ONLY OUR STUDENTS BUT ALSO OUR TEACHERS EMBARKED ON NEW ROLES IN PRODUCING THIS YEAR'S PLAY. THE WILLINGNESS OF EVERYONE INVOLVED TO VENTURE OUT OF THEIR COMFORT ZONE AND EMBRACE NEW CHALLENGES IS COMMENDABLE AND PAVES THE WAY FOR NEW PATHS OF GROWTH AND EXPERIENCE.

THROUGH THEIR PARTICIPATION IN THIS PRODUCTION, OUR STUDENTS HAVE NOT ONLY HONED THEIR ARTISTIC SKILLS BUT ALSO DEVELOPED ESSENTIAL LIFE SKILLS SUCH AS TEAMWORK, COMMUNICATION, AND PROBLEM-SOLVING. THEY HAVE DISCOVERED THE POWER OF THE PERFORMING ARTS AND THE JOY OF EXPRESSING THEMSELVES THROUGH CREATIVITY.

TO OUR PARENTS AND GUARDIANS, THANK YOU FOR YOUR CONSTANT ENCOURAGEMENT AND SUPPORT. YOUR BELIEF IN YOUR CHILDREN'S ABILITIES AND YOUR WILLINGNESS TO INVEST IN THEIR ARTISTIC PURSUITS HAVE PLAYED A CRUCIAL ROLE IN THEIR SUCCESS. YOUR PRESENCE HERE TONIGHT IS A TESTAMENT TO YOUR SUPPORT, AND WE ARE GRATEFUL FOR YOUR CONTINUED PARTNERSHIP IN PROVIDING OUR STUDENTS WITH ENRICHING OPPORTUNITIES.

I ALSO EXTEND MY HEARTFELT APPRECIATION TO THE DEDICATED TEACHERS, STAFF, AND VOLUNTEERS WHO HAVE WORKED TIRELESSLY BEHIND THE SCENES. YOUR GUIDANCE, EXPERTISE, AND UNWAVERING SUPPORT HAVE BEEN INSTRUMENTAL IN BRINGING THIS PRODUCTION TO LIFE.

MAY THIS PRODUCTION SERVE AS A REMINDER OF THE POTENTIAL WITHIN EACH AND EVERY ONE OF OUR STUDENTS. I AM CONFIDENT THAT THE SKILLS THEY HAVE CULTIVATED THROUGH THIS EXPERIENCE WILL SERVE THEM WELL IN THEIR FUTURE ENDEAVORS. ONCE AGAIN, I EXTEND MY WARMEST WELCOME TO ALL OF YOU, AND I HOPE YOU ENJOY THIS EVENING'S PERFORMANCE.

SINCERELY,

TODD WYKS
HEADMASTER



MESSAGE FROM THE DIRECTOR



THIS YEAR'S PRODUCTION IS CERTAINLY ONE THAT I WILL NEVER FORGET. BEING NEW TO THE WORLD OF DIRECTING, I KNEW I HAD A LOT TO LEARN. WE ALSO HAD A LARGE NUMBER OF YOUNG CAST MEMBERS THIS YEAR, SO I WASN'T THE ONLY ONE. TOGETHER, WE SLOWLY PUT THE PUZZLE PIECES TOGETHER AND CREATED SOMETHING TO BE PROUD OF. I WANT TO THANK EVERYONE INVOLVED IN THIS YEAR'S PRODUCTION. FROM STUDENTS, TO FACULTY, TO STAFF, AND EVEN OUTSIDE CONTRACTORS, IT TOOK A HUGE AMOUNT OF TIME AND EFFORT AND I AM GRATEFUL FOR ALL OF YOU. STUDENTS, I HOPE THAT THE EXPERIENCE WAS WORTHWHILE AND THAT YOU MADE SOME MEMORIES THAT YOU CAN CHERISH. THANK YOU FOR LEARNING AND GROWING WITH ME. FAREWELL TO THOSE OF YOU WHO ARE NOT RETURNING; AND FOR EVERYONE ELSE: SEE YOU NEXT YEAR!

SINCERELY,

MR. STEVE SEDO
DIRECTOR
HEAD OF DEPARTMENT
VISUAL AND PERFORMING ARTS



SYNOPSIS



ONCE UPON A TIME IN A FARAWAY LAND, AN ENCHANTRESS TURNS A CRUEL, UNFEELING PRINCE INTO A HIDEOUS BEAST. TO BREAK THE SPELL, THE BEAST MUST LEARN TO LOVE ANOTHER AND EARN HER LOVE IN RETURN BEFORE THE LAST PETAL FALLS FROM AN ENCHANTED ROSE.

TEN YEARS LATER, IN A SMALL VILLAGE FAR BELOW THE BEAST'S CASTLE, A BEAUTIFUL AND INTELLIGENT YOUNG WOMAN, BELLE, YEARNS FOR ADVENTURE ("BELLE"). ON HIS WAY TO SHOW HIS INVENTION AT A FAIR, BELLE'S FATHER, MAURICE, GETS LOST AND SEEKS SHELTER IN THE BEAST'S CASTLE. ENCHANTED SERVANTS - COGSWORTH, LUMIERE, BABETTE, MRS. POTTS AND CHIP - TRY TO MAKE MAURICE COMFORTABLE, BUT THE BEAST IMPRISONS THE INTRUDER.

MEANWHILE, BACK IN TOWN, GASTON, THE VILLAGE BRUTE, PROPOSES TO BELLE, TO THE DISMAY OF LES FILLES DE LA VILLE, WHO FAWN OVER HIM. BELLE TURNS GASTON DOWN ("BELLE - REPRISE"). WHEN BELLE NOTICES GASTON'S SIDEKICK, LEFOU, WEARING HER FATHER'S SCARF, BELLE RUNS OFF TO SEARCH FOR HIM. BELLE FINDS HER MISSING FATHER AT THE CASTLE AND OFFERS HERSELF IN EXCHANGE FOR HIS FREEDOM. THE BEAST AGREES, SENDING MAURICE BACK TO THE VILLAGE, AND THEN ESCORTS BELLE TO HER BEDROOM, WHERE SHE CONSIDERS WHAT SHE HAS DONE ("HOME"). SEEING THEIR GUEST FORLORN, MRS. POTTS AND MADAME DE LA GRANDE BOUCHE COMFORT BELLE ("HOME - TAG").

IN THE VILLAGE TAVERN, LEFOU AND THE VILLAGERS TRY TO LIFT GASTON'S SPIRITS ("GASTON"). WHEN "CRAZY OLD" MAURICE BARGES IN CLAIMING THAT HE HAS SEEN A BEAST, GASTON AND LEFOU FORM A PLAN TO WIN BELLE ("GASTON - REPRISE").

SYNOPSIS



AT THE CASTLE, THE SERVANTS COACH THE BEAST ON HOW TO ACT LIKE A GENTLEMAN. WHEN BELLE REFUSES TO ACCEPT THE BEAST'S INVITATION TO DINNER, HE LOSES HIS TEMPER AND TELLS HER TO STARVE. HOWEVER, LUMIERE AND THE SERVANTS OFFER BELLE AN EXTRAVAGANT FEAST ANYWAY ("BE OUR GUEST"). AFTER, COGSWORTH GIVES BELLE A TOUR OF THE CASTLE AND SHE WANDERS OFF INTO THE FORBIDDEN WEST WING. THE BEAST DISCOVERS HER THERE AND LOSES HIS TEMPER, WHICH CAUSES THE FRIGHTENED BELLE TO FLEE THE CASTLE.

IN THE FOREST, BELLE IS ATTACKED BY WOLVES. THE BEAST COMES TO HER RESCUE, BUT IS INJURED IN THE PROCESS. HAVING A CHANGE OF HEART, BELLE HELPS THE BEAST BACK TO THE CASTLE AND DRESSES HIS WOUND. THE SERVANTS RECOGNIZE SOMETHING DIFFERENT BETWEEN BELLE AND THE BEAST ("SOMETHING THERE") AND EXPRESS THEIR HOPE THAT THE SPELL MAY SOON BE BROKEN ("HUMAN AGAIN"). THE BEAST ASKS BELLE TO HAVE DINNER WITH HIM AND THEY SHARE A ROMANTIC EVENING TOGETHER ("BEAUTY AND THE BEAST").

DESPITE THIS NEW FRIENDSHIP, BELLE LONGS TO SEE HER FATHER. USING THE BEAST'S MAGIC MIRROR, BELLE SEES THAT MAURICE IS IN TROUBLE, SO THE BEAST FREES HER. BELLE FINDS MAURICE IN THE FOREST AND TAKES HIM HOME TO THE VILLAGE, WHERE GASTON HAS ARRANGED FOR MONSIEUR D'ARQUE TO TAKE HIM AWAY. BELLE PROVES THAT HER FATHER IS NOT CRAZY BY SHOWING THE BEAST IN THE MAGIC MIRROR. JEALOUS OF BELLE'S AFFECTION FOR SOMEONE ELSE, GASTON WHIPS THE VILLAGERS INTO A FRENZY. THEY STORM THE CASTLE TO KILL THE BEAST ("THE MOB SONG"). WHILE THE SERVANTS DEFEND THE CASTLE FROM THE VILLAGERS' ATTACK, GASTON CONFRONTS AND STABS THE BEAST IN THE WEST WING. THE BEAST, WHILE STILL MUCH STRONGER THAN GASTON, REFUSES TO KILL HIM AND GASTON RUNS AWAY IN SHAME. BELLE ARRIVES AND TELLS THE DYING BEAST SHE LOVES HIM ("HOME - REPRISE"), WHICH BREAKS THE SPELL. THE BEAST TRANSFORMS BACK INTO THE PRINCE, THE SERVANTS BECOME HUMAN AGAIN, AND THEY ALL LIVE HAPPILY EVER AFTER.

MT ENTERPRISES, INC. ALL RIGHTS RESERVED.

THE CAST

BELLE: CAMILA ISABEL UGARTE BEAST/PRINCE: JIHWAN AN

MAURICE: DYLAN JACOB DINO

GASTON: KARL ALAN CUDIA

LEFOU: ANDREAS BORELLO

LUMIERE: TEO DIDIER LADRIERE

COGSWORTH: ARDRE NIKOLAS VALDEZ

MRS. POTTS: EUN JIN KIM

CHIP: ELIN SOLVEIG EFFINGER

BABETTE: SAVANNAH USABELLE IGNACIO

MADAME DE LA GRANDE

BOUCHE: JULIANNE FELINE RAPP

VILLAGER/SERVANT:

ADRIANA SOPHIA ADAM

VILLAGER/SERVANT:

GABRIELLE RYSTIN REUTOTAR

OLD BEGGAR WOMAN /
ENCHANTRESS:

ARYANNA ISABELLE GRIARTE

NARRATOR 1:

CALEB CRISTOFF RIVERO

NARRATOR 2:

GEORGE CHRISTOPHER KING

LA FILLE 1:

JELAINE MAE SUPERIO

LA FILLE 2:

ABUDE RAZUKO DRAKE

LA FILLE 3:

ATASHA PIA AMOS

MR. D'ARQUE:

ZACHARY HENRY CABALANG

BEAUTY AND THE BEAST BELLE AND THE PRINCE



CAMILA UGARTE JIHWAN AN

LUMIERE AND COGSWORTH

TEO DIDIER
CHRISTOPHE
LADRIERE



ARDRE
NIKOLAS
VALDEZ

MRS. POTTS AND CHIP

EUN
JIN
KIM



ELIN
SOLVEIG
EFFINGER



MADAME
DELA
GRANDE
BOUCHE

JULIANNE
PELINE
RAPP



BABETTE

SAVANNAH
USABELLE
IGNACIO



GASTON AND L EFOU

KARLA ALAN
PAUL CUDIA



A NDREAS
B ORELLO

MAURICE AND MR. D'ARQUE

DYLAN
JACOB
Diño



Z ACHARY
H ENRY
C ABALANG

OLD BEGGAR WOMAN/ ENCHANTRESS



A RYANNA ISABELLE
G RIA RTE



L A PILLES

A BCDE RA ZUKO DRAKE

JELAINE MAE SUPERIO

A TASHA PIA A MOS

NARRATORS



CALEB
CRISTOFF
RIVERO

GEORGE
CHRISTOPHER
KING



ADRIANA SOPHIA ADAM
GABRIELLE KYSTIN REUTOTAR



BACKSTAGE CREW

CHA Z PRANGNELL (CO-HEAD)

CHAEWON LEE (CO-HEAD)

JINWOO "JINU" CHOI MICHAEL JONATHAN MAGTALAS

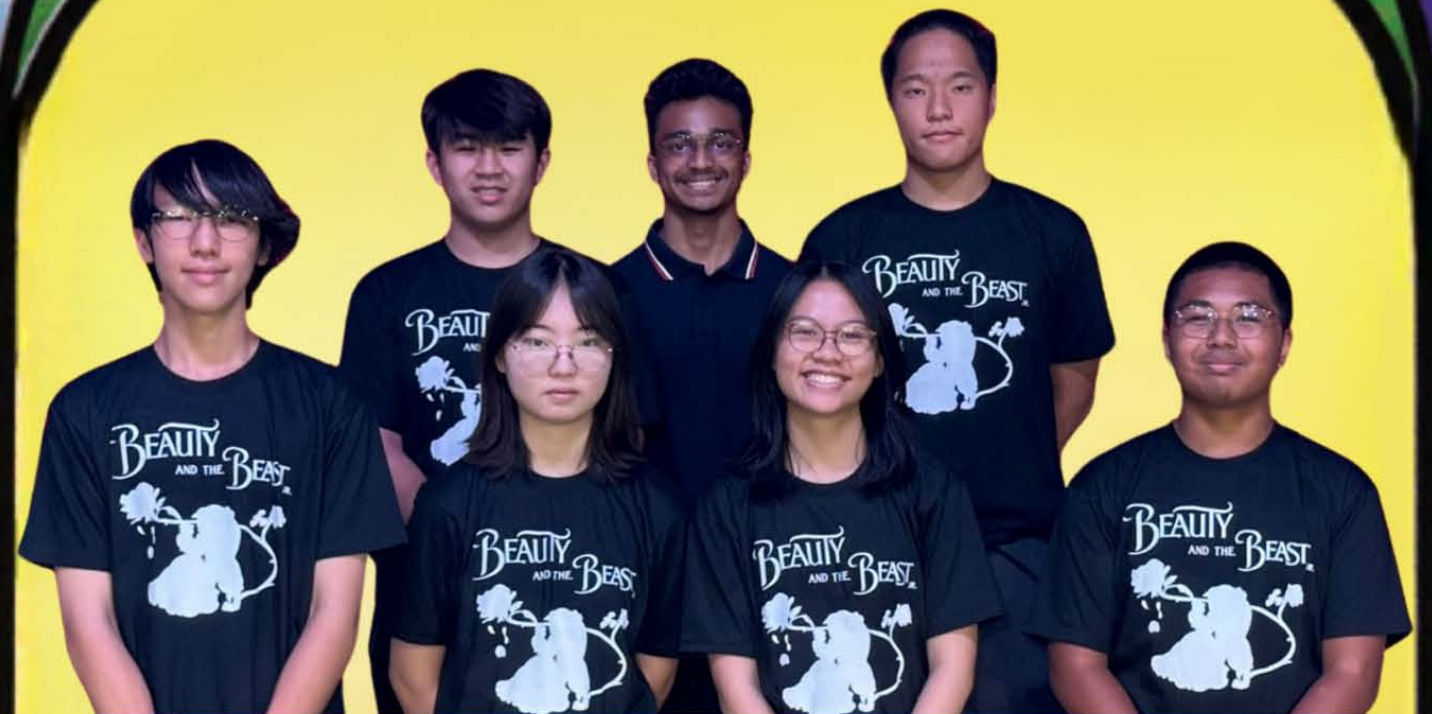
JIHEON "EDWARD" IM KEITH CHRISTOPHER FLORES

YANG "DENNY" KUEI YOUNGHYUN "BEN" CHOI

EUNSEOK "KYLE" SON SEUNGWON "ANDY" MIN



TECHNICAL CREW



HEAD: LIUYOUNGCHAE "ANDREA" HAN

LIGHTS: CATERINA MARIA RODRIGUEZ

SOUNDS/CAMERA: DARREN MAVERIC CUA

MICS: KUN KANG

MOHAMED LUTH KALIMUDIYANSELA IFAMY

SPOTLIGHTS: HUNWOO "JUSTIN" CHO

CHRISTOPHER MICHAEL KING



ADVERTISING CREW

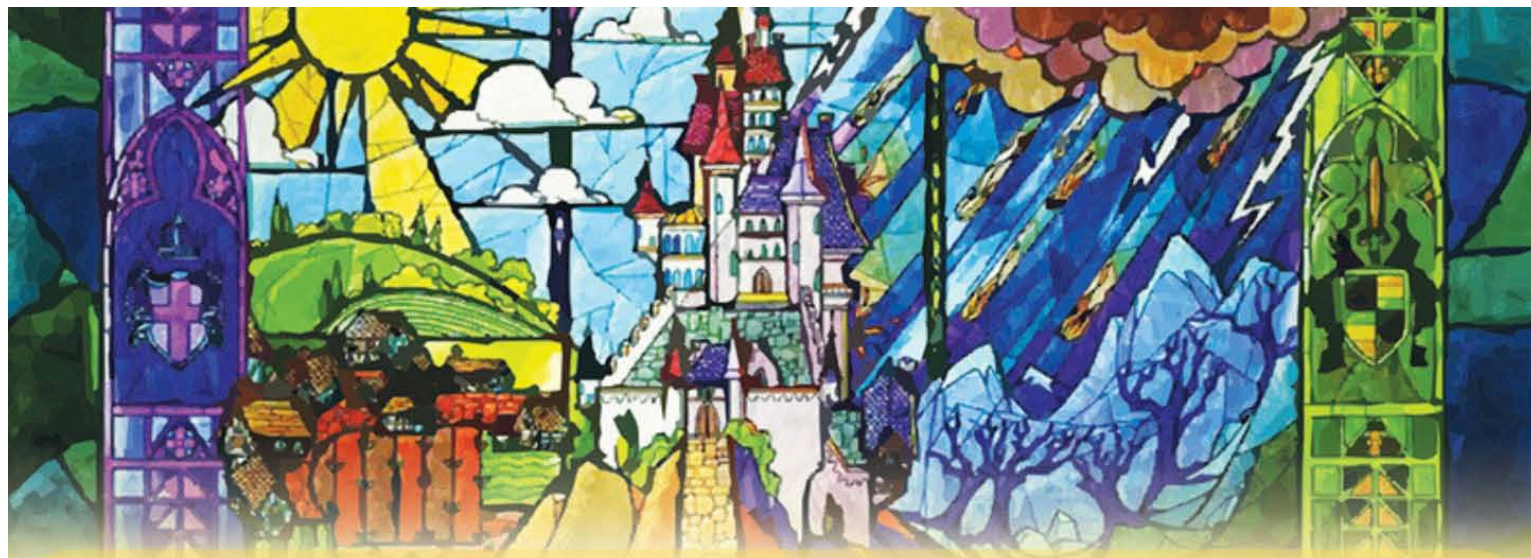
USABELLA LAURICE ANTIPOLLO
HEEYOUNG "CLAIRE" YOU
MIGUEL JADEN FACTURA
FRANCES ANNE HILADO
MAXIM BIANCA ECDAO
BEATRIX SORVIK



HAIR & MAKEUP CREW

MARGARITA SOFIA RAMOS
FRANCES ANNE HILADO
MAXIM BIANCA ECDAO
USABELLA LAURICE ANTIPOLLO
LOPHIA LYNDSAY FENWICK
BEATRIX SORVIK





USHERS

LOE MELINDA CABALANG
 JANZEN THOMAS SU
 BRIGETT ANN YEATER
 AIKA PONGE
 YOUNGJUN "CHRIS" CHOI



PROPS CLUB

BRIGETT ANN YEATER	JOSE ARTURO CALIMLIM III
MAXIM BIANCA ECDAO	MIRO CHUA CHIACO
USABELLA LAURICE ANTIPOLLO	FRANCESCA RONCO
FRANCES ANNE HILADO	MARION OLIVE PICK
ELIN SOLVEIG EFFINGER	JILLIAN USABELLE ONG
MARA-ALEXANDRIA SARINAS	HEEYOUNG "CLAIRE" YOU
TEO DIDIER CHRISTOPHE LADRIERE	

VIDEO COVERAGE CREW

ERWIN CABALANG
 DARREN CUA
 JOAQUIN VAN L WIETEN



ARTISTIC STAFF

DIRECTOR / MUSIC DIRECTOR / TECH DIRECTOR:

MR. STEVE SEDO

SCENIC DESIGN AND PROPS DIRECTOR: MS. CATHY MAYCON

CHOREOGRAPHY DIRECTOR: MS. LAN GAO

BACKSTAGE DIRECTOR: MRS. AVERNIE TAYCO

COSTUME, HAIR, AND MAKEUP DIRECTOR: MS. JAME PENA

FRONT OF HOUSE DIRECTORS:

MRS. SHEILA GRIARTE & MS. JOANNA ISIDRO

ADVERTISING:

MRS. MICHELLE ALMANZOR & MRS. CATHRINE LIM-RIVERO



ACKNOWLEDGEMENTS

ACCOUNTING DEPARTMENT

ACTIVITIES OFFICE

ADMISSIONS OFFICE

BRENT SUBIC ADMINISTRATION

CAFETERIA STAFF

HOUSEKEEPING SERVICES

IT DEPARTMENT

MAINTENANCE DEPARTMENT

PURCHASING OFFICE

UPPER SCHOOL OFFICE